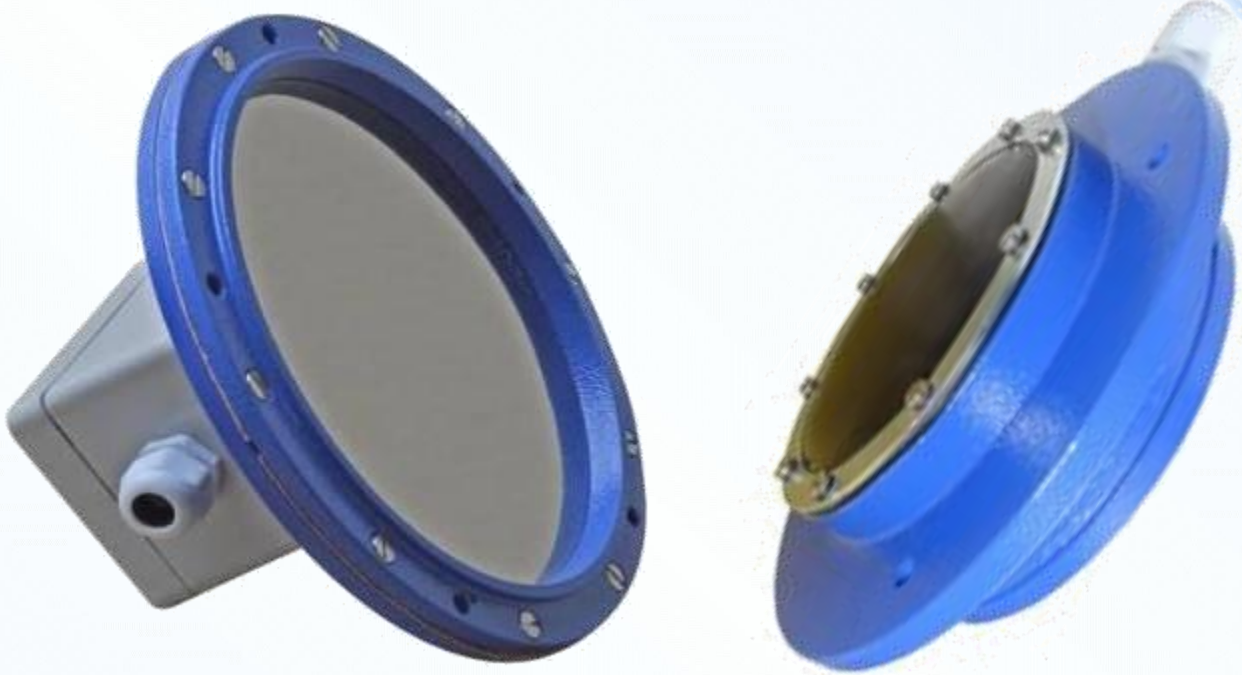


Diaphragm Level Switch

We are introducing our Diaphragm Level Switch to sensing solid level in various applications. It is a type of pressure switch used to detect Low or Hi Levels in silos/bins containing dry, non-hazardous free flowing materials.

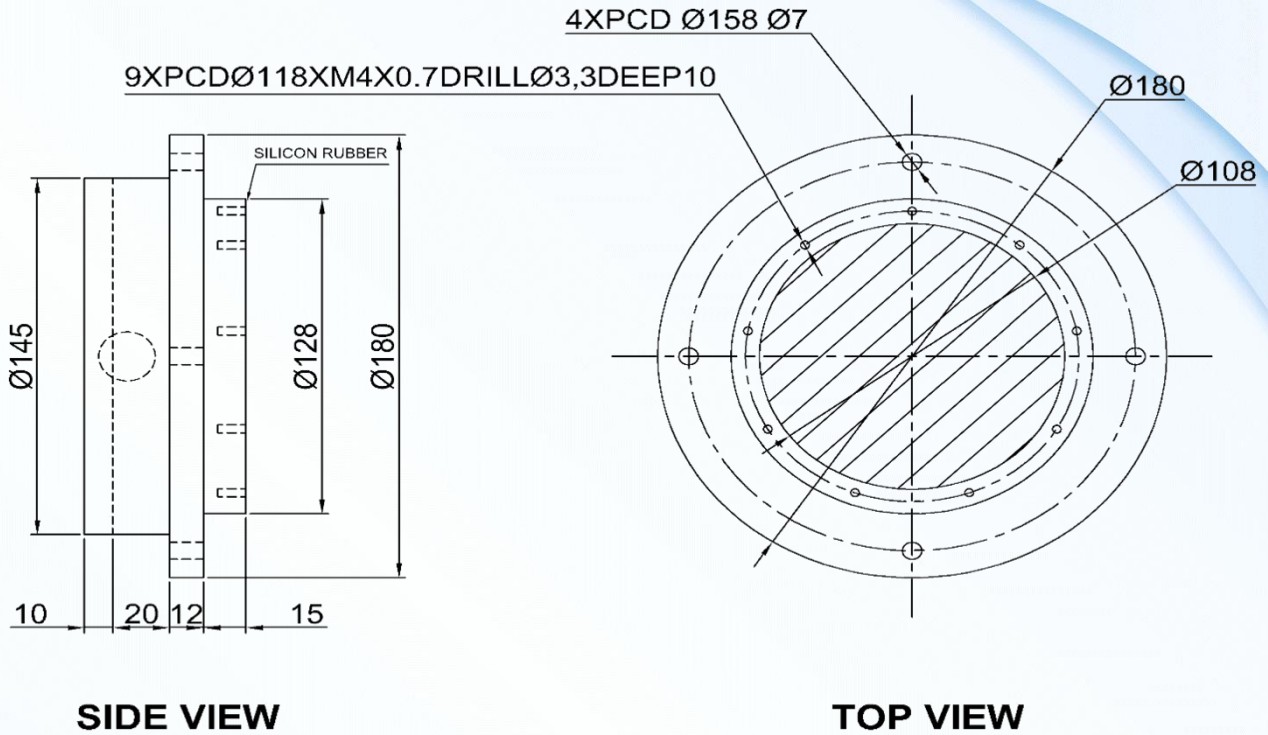


Diaphragm Level Switch is a rugged, maintenance-free mechanical level sensing device designed for the reliable detection of dry bulk solids, granular materials, or powders in bins, hoppers, and silos. Featuring a corrosion-resistant Aluminum body, it is ideal for use in harsh and dusty environments.

Silent Features :

- Compact, rugged & corrosion resistant.
- Easy to install, transport & handle.
- Point level detection in bins and silos.
- No power supply required.
- Maintenance-free and highly reliable for solid level detection.
- Accurate switching unaffected by humidity or dust

Mounting Details :



Technical Specifications :

Mounting Type	Flange Type Bottom / Side
Switch Rating	250 VAC / 5A
Switch Type	Micro Switch / SPDT Type
Diaphragm Material	Neoprene / PTFE / SS 304 / SS316
Sensitivity	200 gm (Rubber) / 300 gm (PTFE) / 400 gm (SS304/SS16)
Process Temperatures	-40 To 125 °C
Process Pressure	- 1 to 10 Bar (Depend Upon Material)